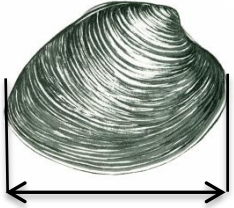


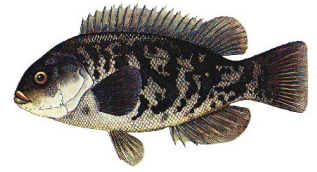
# ATTENTION ANGLERS

## 2016 NJ Recreational Minimum Size, Possession Limits & Seasons



**Hard Clam 1.5 inches**  
**Recreational Limit – 150 clams**  
**No harvest on Sunday**  
**Shellfish license required**

- Fish are measured from the tip of the snout to tip of the tail (except Black Sea Bass and Sharks).
- Cleaning or filleting of fish with a minimum size limit while at sea is prohibited. See the Marine edition of the Fish & Wildlife Digest or the Fish & Wildlife website for exceptions.



**Tautog 15 inches**  
**4 fish Jan. 1 – Feb. 28**  
**4 fish Apr. 1 – Apr. 30**  
**1 fish July 17 – Nov. 15**  
**6 fish Nov. 16 – Dec. 31**



### Striped Bass or Hybrid Striped Bass

**1 fish at 28 inches to less than 43 inches**

**1 fish at 43 inches or greater**

**See Digest for Striped Bass Bonus Program**

Del. River and tributaries Calhoun St. Bridge, Trenton to Salem

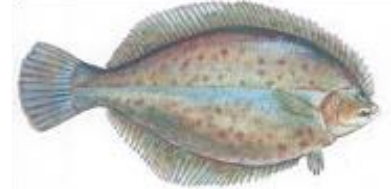
River and tributaries

Open Mar. 1 – Mar. 31 & June 1 – Dec. 31

Atlantic Ocean

- 0-3 miles from shore, no closed season
- Greater than 3 miles from shore, closed

All other marine waters, open Mar. 1 – Dec. 31



### Winter Flounder

**2 fish at 12 inches**

**Open Season: Mar. 1 – Dec. 31**



### Summer Flounder (Fluke)

Del. Bay and Tributaries **4 Fish at 17 Inches**

All Other Marine Waters **5 fish at 18 inches**

See Digest for IBSP and DE Bay Regulations

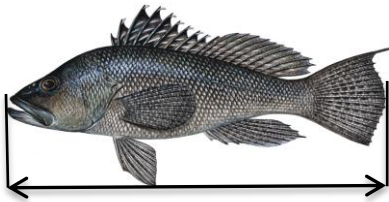
**Open Season: May 21 – Sept. 25**



### Weakfish

**1 fish at 13 inches**

**Open Season: Jan. 1 – Dec. 31**

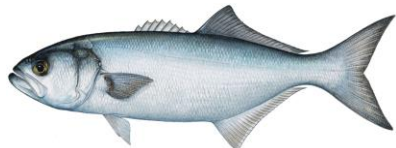


### Black Sea Bass

**10 fish at 12.5 inches May 23 – June 19**

**2 fish at 12.5 inches July 1 – August 31**

**15 fish at 13 inches Oct. 22 – Dec. 31**



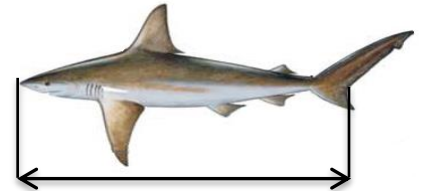
### Bluefish

**15 fish; No Minimum Size**

**Open Season: Jan. 1 – Dec. 31**

**PROHIBITED SPECIES**  
 See the Marine edition of the NJ Fish & Wildlife Digest or Fish & Wildlife's website for a complete list.

Other Species	Possession Limit	Total Length
American Eel	25	9"
Black Drum	3	16"
Cod	No Limit	21"
Haddock	No Limit	21"
Pollock	No Limit	19"
King Mackerel	3	23"
Red Drum	1	18-27"
River Herring	CLOSED	N/A
Scup (Porgy)	50	9"
<ul style="list-style-type: none"> <li>• Open Season: Jan. 1 – Feb. 28 &amp; Jul. 1 – Dec. 31</li> </ul>		
Shad	6	No Limit
<ul style="list-style-type: none"> <li>• Not more than 3 American shad in Del. Bay, River &amp; tributaries</li> <li>• No American shad in all other waters</li> </ul>		
American Lobster	6	3 3/8" to 5 1/4" Carapace Length
<ul style="list-style-type: none"> <li>• LMA 4 Open Season: Jan. 1 - Apr. 29 &amp; June 1 – Dec. 31</li> <li>• LMA 5 Open Season: Jan. 1 – Jan. 31 &amp; April 1 – Dec. 31</li> </ul>		
Jonah Crab	50	4 3/4" Carapace Width



### Shark

**1 fish per vessel at 54 inches**

**Seasons: see Marine Digest**



### Blue Crab

**(measured point to point)**

**Peeler or Shedder – 3 inches**

**Soft – 3 1/2 inches**

**Hard – 4 1/2 inches**

**Recreation Limit – One Bushel**

**Crab pot/Trot line Seasons:**

**Delaware Bay & tributaries**

**Apr. 6 – Dec. 4**

**All other waters**

**Mar. 15 – Nov. 30**

**Register before fishing! It's free, easy, and required.**

[SaltwaterRegistry.nj.gov](http://SaltwaterRegistry.nj.gov)

New Jersey Department of Environmental Protection  
 Division of Fish and Wildlife  
[www.njfishandwildlife.com](http://www.njfishandwildlife.com)

Revised 5/2/2016

